

Devil's Gate Reservoir Restoration Project Southeast Entrance Improvement

Third Public Outreach Meeting
January 31, 2022 – 6 PM to 7 PM

Agenda

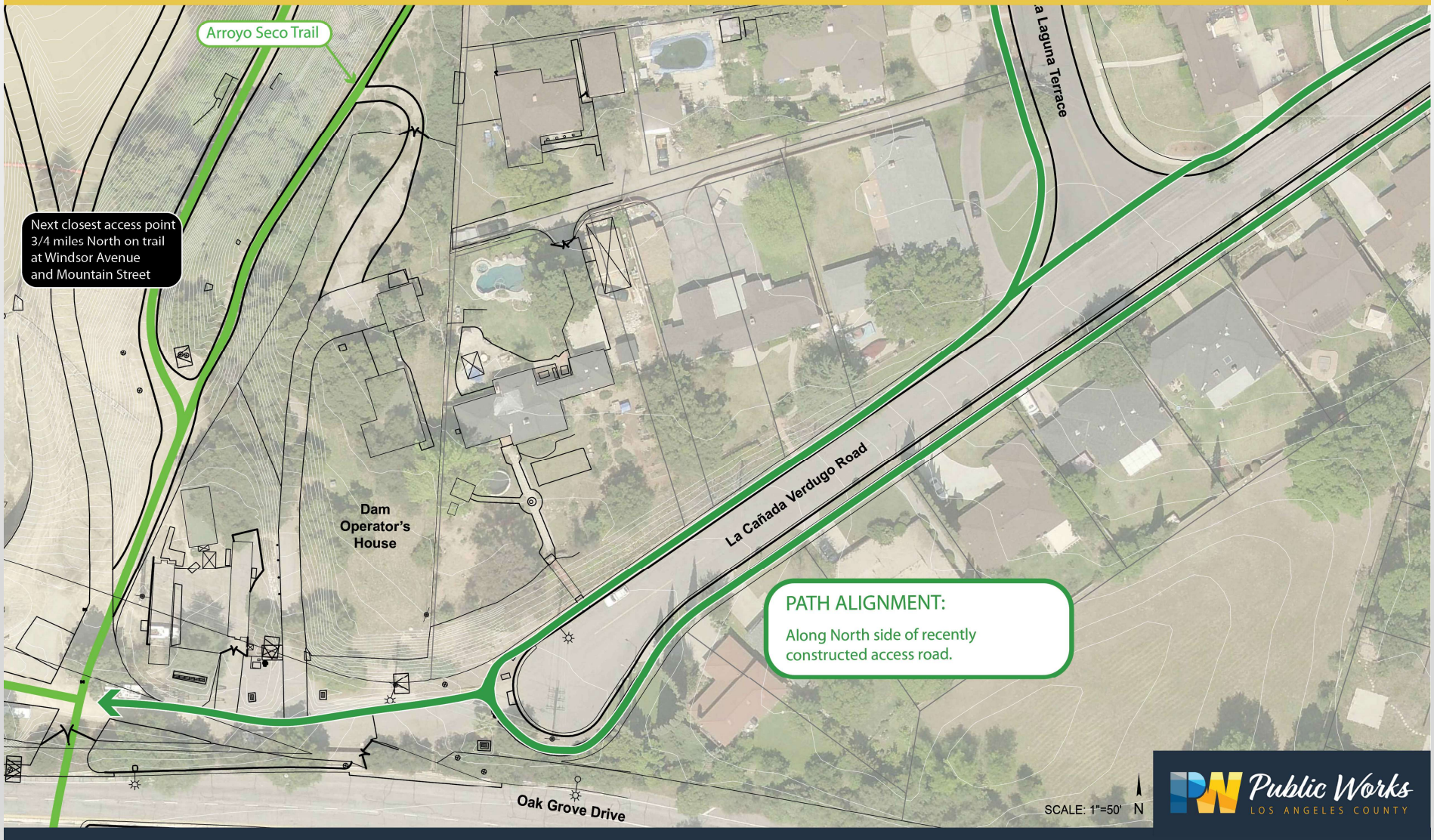
- Introductions & Why we are here
- Summary of previous meetings
- Design Options
- Open Discussion
- Next steps

Current Status



Current Status

DEVIL'S GATE DAM ENTRANCE - ACCESS & CONNECTIVITY





Taking a Community-First Approach

Summary of Comments from Previous Meetings

- Teardown/refurbish old building & chain link fence
- Remove one of the new vehicle entrances – Slip lane & bike safety
- Remove concrete/repave with natural materials
- No benches – discourage loitering
- Return entrance path to lower grade/Use natural materials for a barrier rather than chain link fence
- Boulder/Bollards may not stop 4x4 trespassing & damage to new plants
- Work with City of Pasadena to improve bike/pedestrian/vehicle safety on Oak Grove

Pavement Quantities

2017 – Pre Project ~11,000 sq ft of pavement



Timelapse





Taking a Community-First Approach

We want to hear your choices!

When viewing the renderings please consider the following:

1. Entrance Plaza - a) Boulders, b) Columns
2. a) Option 1 (direct path), b) Option 2 (meandering path)
3. a) Earthen Berm, or b) Gabions (rock barriers)
4. Habitat Protection - a) Fencing, or b) No Fencing



Taking a Community-First Approach

2018 View from Cul-de-sac





Taking a Community-First Approach

2021 View from Cul-de-sac



DEVIL'S GATE DAM ENTRANCE - CONCEPT 1



Option 1 from Cul-de-sac





Taking a Community-First Approach

2018 View of Southeast Entrance





Taking a Community-First Approach

Looking at Cul-de-sac





Taking a Community-First Approach

Looking East along path





Taking a Community-First Approach

Cross Section

SECTION A



+1081
+1080
+1079
+1078
+1077
+1076
+1075
+1074
+1073
+1072
+1071
+1070
+1069

Existing Grade

SECTION B



+1081
+1080
+1079
+1078
+1077
+1076
+1075
+1074
+1073
+1072
+1071
+1070

Existing Grade

DEVIL'S GATE DAM ENTRANCE - CONCEPT 1



- 1 Decomposed Granite Path
- 3 Existing Tree. Protect in place
- 5 Updated Entrance Sign
- 7 Wayfinding / Interpretive Signage
- 9 Boulder as Bollard
- 11 Shared Bike Route
- 13 Slip Road for Maintenance
- 15 New Gate
- 2 Colored Concrete Crossing
- 4 Bio-Swale
- 6 Drought-tolerant and Native Plants
- 8 Connection to Existing Trail Network.
- 10 Colored Concrete Entry
- 12 Wood chips
- 14 Stamped Concrete Paving Strip

SCALE: 1" = 20'-0"
N

•DEVIL'S GATE DAM ENTRANCE - CONCEPT 2



Option 2 from Cul-de-sac





Taking a Community-First Approach

2018 View of Southeast Entrance





Taking a Community-First Approach

Option 2 - Looking at Cul-de-sac





Taking a Community-First Approach

Looking East along path





Taking a Community-First Approach

Cross Section

SECTION A



+1081
+1080
+1079
+1078
+1077
+1076
+1075
+1074
+1073
+1072
+1071
+1070

Existing Grade

SECTION B



+1081
+1080
+1079
+1078
+1077
+1076
+1075
+1074
+1073
+1072

Existing Grade

DEVIL'S GATE DAM ENTRANCE - CONCEPT 2



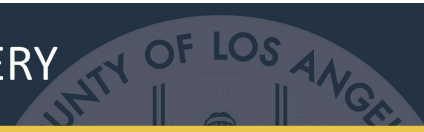
- 1 Decomposed Granite Path
- 3 Existing Tree. Protect in place
- 5 Updated Entrance Sign
- 7 Wayfinding / Interpretive Signage
- 9 Short Retaining Wall
- 11 Shared Bike Route
- 13 Slip Road for Maintenance
- 15 Decorative Bollard
- 17 Symbolic Low Fencing
- 2 Colored Concrete Crossing
- 4 Bio-Swale
- 6 Drought-tolerant & Native Plants
- 8 Connection to Existing Trail Network
- 10 Colored Concrete Entry
- 12 Wood chips
- 14 Stamped Concrete Paving Strip
- 16 New Gate

SCALE: 1" = 20'-0"
 N

DEVIL'S GATE DAM ENTRANCE - PLANTING CONCEPT



DEVIL'S GATE DAM ENTRANCE - PRECEDENT IMAGERY



Decomposed Granite Path



Interpretive Sign



Stamped Concrete



Colored Concrete



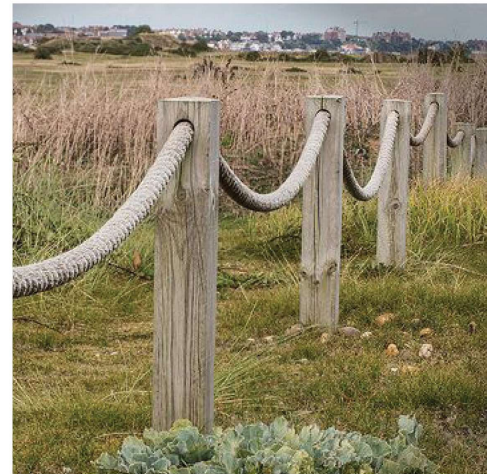
Boulders



Short Gabion Wall



Decorative Bollard



Symbolic Low Fencing



Taking a Community-First Approach

Southeast Entrance Improvements

Open Discussion

- Remain muted
- Click Reactions & Raise Hand Feature and wait to be called upon before unmuting, *9 for phone call-ins, *6 to unmute
- Remain on topic – This is for the Southeast Entrance!
- Alternatively - Type discussion point in the chat
- Don't worry if you aren't called on! Comments can be submitted via Devilsgateproject@pw.lacounty.gov



Taking a Community-First Approach

We want to hear your choices!

Please type your choices into the chat:

1. Entrance Plaza - a) Boulders, b) Columns
2. a) Option 1 (direct path), b) Option 2 (meandering path)
3. a) Earthen Berm, or b) Gabions (rock barriers)
4. Habitat Protection - a) Fencing, or b) No Fencing



Talk to Us

- Submit comments to devilsgateproject@pw.lacounty.gov
- Deadline for comments February 14, 2022
- Presentation will be posted on the website
- Public Works will meet with City of Pasadena to present Design

Subscribe to our e-mail list to receive updates on the project.



DevilsGateProject.com



devilsgateproject@pw.lacounty.gov



Hotline: (626) 458-2507